



Creek View 18 Cryben, Gweek, TR12 6UP

£425,000 Freehold

CHRISTOPHERS

ESTATE AGENTS

Creek View 18 Cryben

- DETACHED THREE BEDROOM BUNGALOW
- FABULOUS OPEN PLAN LIVING SPACE
- STYLISH KITCHEN AND LUXURIOUS BATHROOM
- ATTRACTIVE LOW MAINTENANCE GARDENS
- SOUGHT AFTER CREEKSIDE VILLAGE LOCATION
- COUNCIL TAX BAND D
- FREEHOLD
- EPC – E48

This delightful bungalow enjoys an elevated position, offering wonderful views across the village and boatyard to the countryside beyond. The property provides a spacious, light-filled home with an abundance of style and comfort.

The open-plan living area is perfect for modern living, featuring a large lounge/dining room with fabulous views, creating a welcoming space for both relaxation and entertaining. The spacious entrance vestibule offers flexibility, ideal for use as a music room or home office. The refitted kitchen is a true highlight, boasting stylish pale grey units, white stone worktops, and beautiful coastal blue tiles, creating a sophisticated yet functional space. There are three bedrooms, with the master bedroom benefiting from built-in storage for added convenience. The luxurious bathroom completes the interior, offering a contemporary and stylish space for unwinding.

Outside, the low-maintenance gardens are a tranquil retreat, designed for ease of care while remaining beautifully landscaped. Perfect for alfresco dining with friends and family, the gardens are stocked with mature shrubs and plants, enhancing the peaceful atmosphere.

The property enjoys light and airy living spaces throughout, with stunning views to the front of the property, and the rear garden backs onto a field offering the ultimate privacy and relaxation.

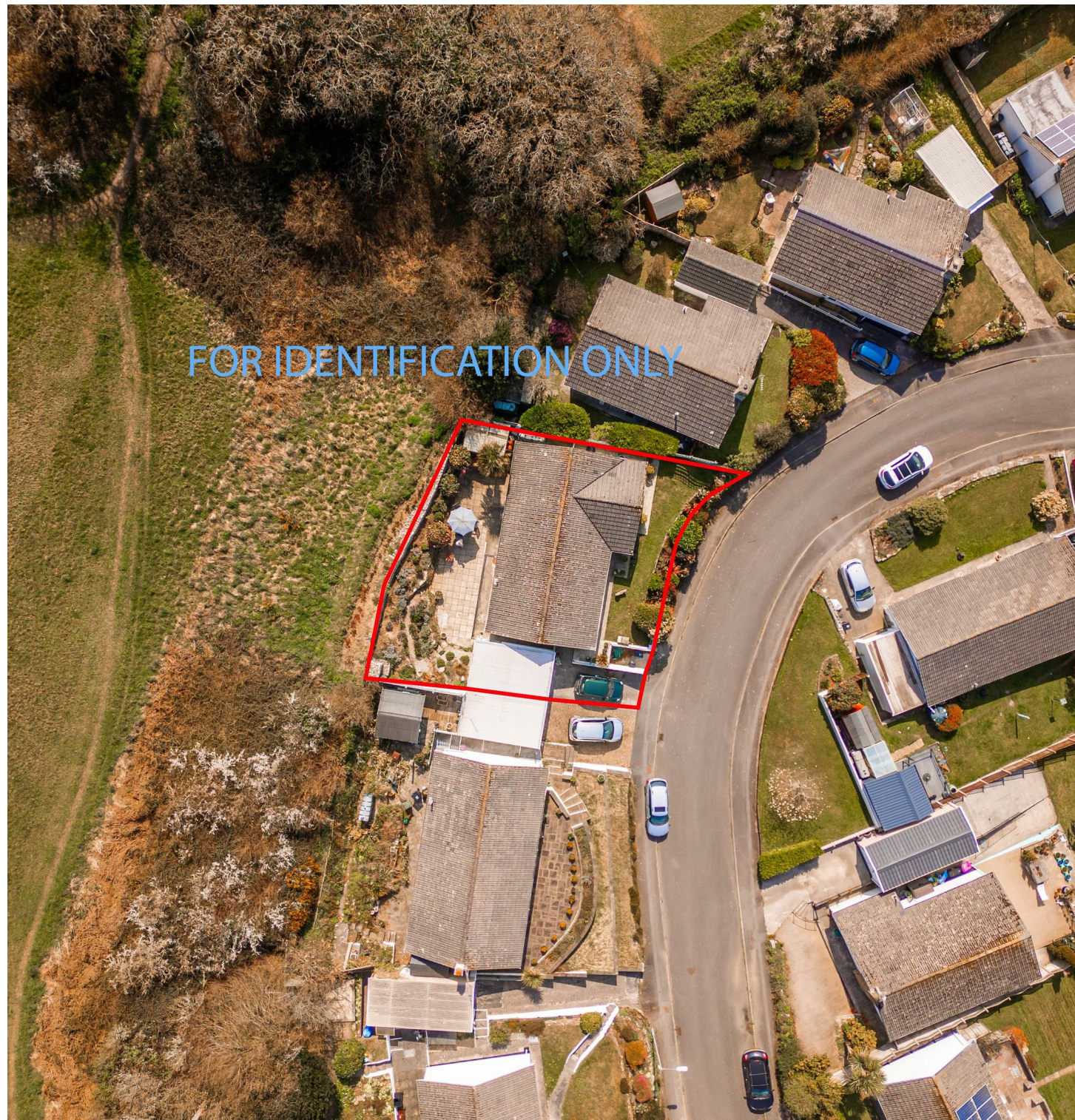
Gweek is a vibrant village with a welcoming community, offering a pub and restaurant and a well-stocked village stores and deli for everyday conveniences. For sailing enthusiasts, the renowned Helford River and its famous sailing waters are just moments away and the village boatyard provides launch and storage facilities for boat lovers.

Conveniently located, the major towns of Helston and Falmouth are within easy reach, as is the City of Truro, along with the picturesque Lizard Peninsula.

This wonderful property offers an ideal opportunity for someone seeking an active retirement home or perhaps a family residence.

THE ACCOMMODATION COMPRISES (DIMENSIONS APPROX)

Door with side screen to entrance porch.







ENTRANCE PORCH 19'7" x 16'4" (5.99m' x 4.98m)

With tiled floor, radiator and window to front offering views across the boatyard to the countryside beyond.

Glazed door and side screen to entrance vestibule/music room.

ENTRANCE VESTIBULE/MUSIC ROOM 12'9" x 9'8" (3.89m x 2.95m)

A versatile space currently used as a music room by the present vendor which would also be a perfect space for those needing to work from home. With vertical radiator, window to front and opening into inner hallways and open plan to lounge/dining room.

LOUNGE/DINING ROOM 26'8" x 11' (8.13m x 3.35m)

With sitting area to the front with radiator and window offering fabulous views across the boatyard to the countryside beyond. Decorative fireplace currently housing a log effect gas fire (disused).

DINING AREA

With radiator and window to rear overlooking the garden and filed beyond. Opening into kitchen.

KITCHEN 12'1" x 9'5" (3.68m x 2.87m)

A beautifully fitted stylish kitchen in tones of pale grey with stone work surfaces over and beautiful coastal blue tiles. Fitted with a Zanussi electric oven with induction hob over and stainless steel filter and light above. Inset one and a half bowl stainless steel with mixer tap, space and plumbing for dishwasher and space and point for fridge/freezer, matching cupboard housing Worcester Green Star Heat Slave boiler. Window and stable door to rear garden offering an attractive view over the garden to the field beyond.

INNER HALLWAY

With radiator, utility cupboard with space and plumbing for washing machine and space and point for condenser tumble drier. Loft access and doors to various rooms.

BEDROOM ONE 13' x 9'4" (3.96m x 2.84m)

With radiator, window to rear overlooking the garden, comprehensive range of built-in storage offering a good amount of hanging and shelving.

BEDROOM TWO 12'4" x 9'4" (3.76m x 2.84m)

With radiator, window to the front with fabulous views across the village and countryside beyond.

BEDROOM THREE 8'8" x 6'8" (2.64m x 2.03m)

With window to the front and radiator.

BATHROOM 8'7" x 7'4" (2.62m x 2.24m)

Luxuriously fitted; the perfect place to relax and unwind at the end of a busy day. With shower bath and chrome effect domestic hot water shower over with drench head and hand held wand. Wash handbasin in vanity unit with storage below, low level W.C., tiled walls with stylish large matt grey tiles and matt grey ladder style radiator, window to the rear.

OUTSIDE

To the front of the property is a driveway offering parking and leading to the garage and a path to the front door. To the immediate front of the property is an attractive area offering a terraced patio, lawn and beautifully planted border stocked with mature trees and shrubs. The garden provides plenty of colour including palms and Camellias. There is a useful storage area at the front perfect for bins and recycling. The rear garden is a wonderful tranquil haven in which to relax and perfect for alfresco dining and hosting, designed to be both attractive and low maintenance. There is a patio terrace with tiered rockery style garden thoughtfully planted with a range of mature shrubs and plants. There is also useful shed and pedestrian access to the utility room.

GARAGE

The garage, 11'7" x 8'6", has been divided and offers a front section with up and over door, power and light, used for storage and a workshop area with work bench with vice and power connected.

Utility area, 11'6" x 8' The rear part of the garage is a useful space with power, light and water connected. Space and plumbing for washing machine. Pedestrian access door to garden.

SERVICES

Mains electricity, water and drainage. Oil fired central heating. LPG connected for the fire.

VIEWING

To view this property or any other property we are offering for sale, simply call the number on the reverse of these details.

DIRECTIONS

From Helston take the A3083 towards The Lizard. Just past RNAS Culdrose, turn left at the roundabout, signposted Gweek and Coverack. Travel for a short distance, then take the turning on the left signposted Gweek. Follow this road into Gweek, go over the two bridges and past the public house. Bear right up the hill and take the next turning on the right hand side, follow the road into Cryben where the property will be seen on your left hand side indicated by our Christophers For Sale Board.

COUNCIL TAX

Council Tax Band D.

MOBILE AND BROADBAND

To check the broadband coverage for this property please visit -

<https://www.openreach.com/fibre-broadband>

To check the mobile phone coverage please visit -

<https://checker.ofcom.org.uk/>

DATE DETAILS PREPARED

7th April, 2025.

ANTI-MONEY LAUNDERING

We are required by law to ask all purchasers for verified ID prior to instructing a sale

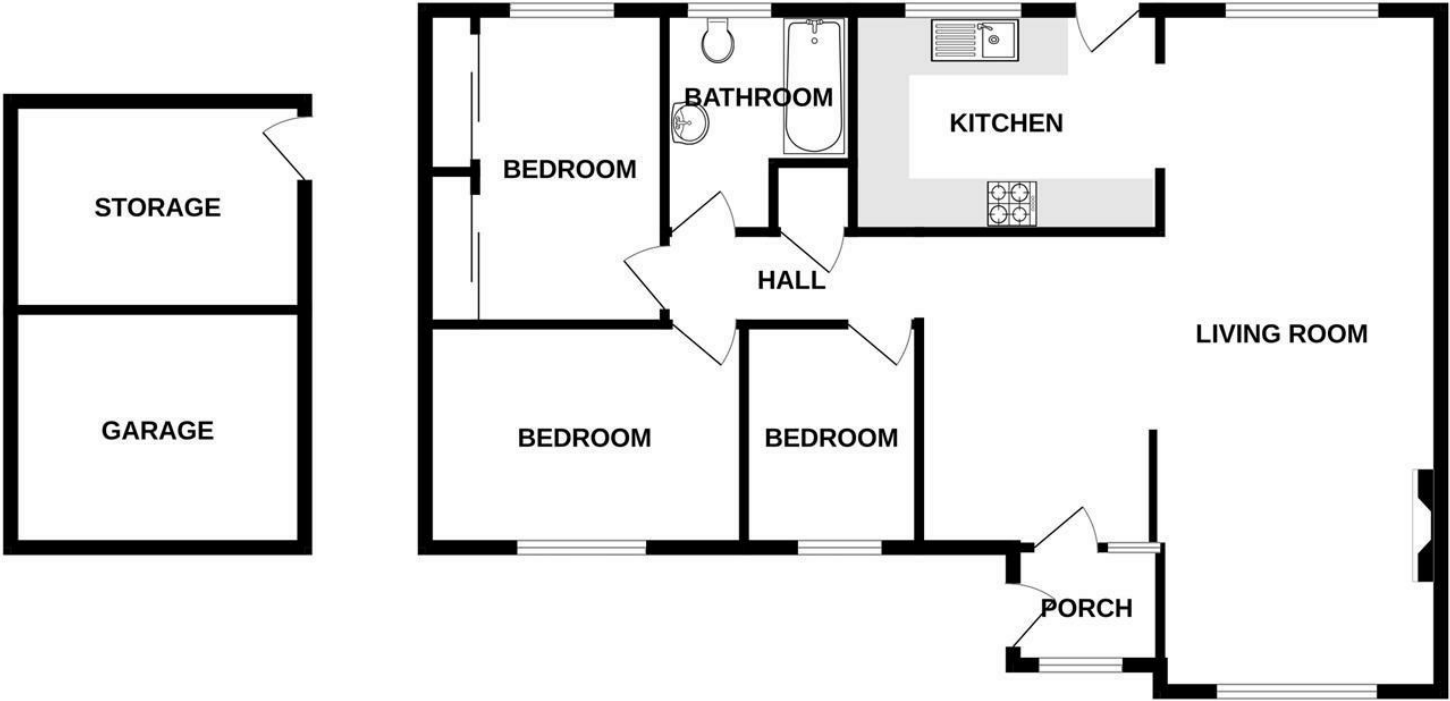
PROOF OF FINANCE - PURCHASERS

Prior to agreeing a sale, we will require proof of financial ability to purchase which will include an agreement in principle for a mortgage and/or proof of cash funds.





GROUND FLOOR
1139 sq.ft. (105.8 sq.m.) approx.



TOTAL FLOOR AREA : 1139 sq.ft. (105.8 sq.m.) approx.

Whilst every attempt has been made to ensure the accuracy of the floorplan contained here, measurements of doors, windows, rooms and any other items are approximate and no responsibility is taken for any error, omission or mis-statement. This plan is for illustrative purposes only and should be used as such by any prospective purchaser. The services, systems and appliances shown have not been tested and no guarantee as to their operability or efficiency can be given.
Made with Metropix ©2025



Energy Efficiency Rating		
	Current	Potential
Very energy efficient - lower running costs		
(92 plus) A		76
(81-91) B		
(69-80) C		
(55-68) D		48
(39-54) E		
(21-38) F		
(1-20) G		
Not energy efficient - higher running costs		
England & Wales		EU Directive 2002/91/EC

These particulars are set out as a general outline in accordance with the Property Misdescriptions Act (1991) only for the guidance of intending purchasers or lessees, and do not constitute any part of an offer or contract. Details are given without any responsibility, and any intending purchasers, lessees or third parties should not rely on them as statements or representations of fact, but must satisfy themselves by inspection or otherwise as to the correctness of each of them. We have not carried out a structural survey and the services, appliances and specific fittings have not been tested. All photographs, measurements, floor plans and distances referred to are given as a guide only and should not be relied upon for the purchase of a property or any other fixtures or fittings. Gardens, roof terraces, balconies and communal gardens as well as tenure and lease details cannot have their accuracy guaranteed for intending purchasers. Lesser details, service ground rent (where applicable) are given as a guide only and should be checked and confirmed by your solicitor prior to exchange of contracts.



Christophers Estate Agents

5 Wendron Street, Helston, TR13 8PT

01326 565566 | property@christophers.uk.com | christophers.uk.com

CHRISTOPHERS
ESTATE AGENTS